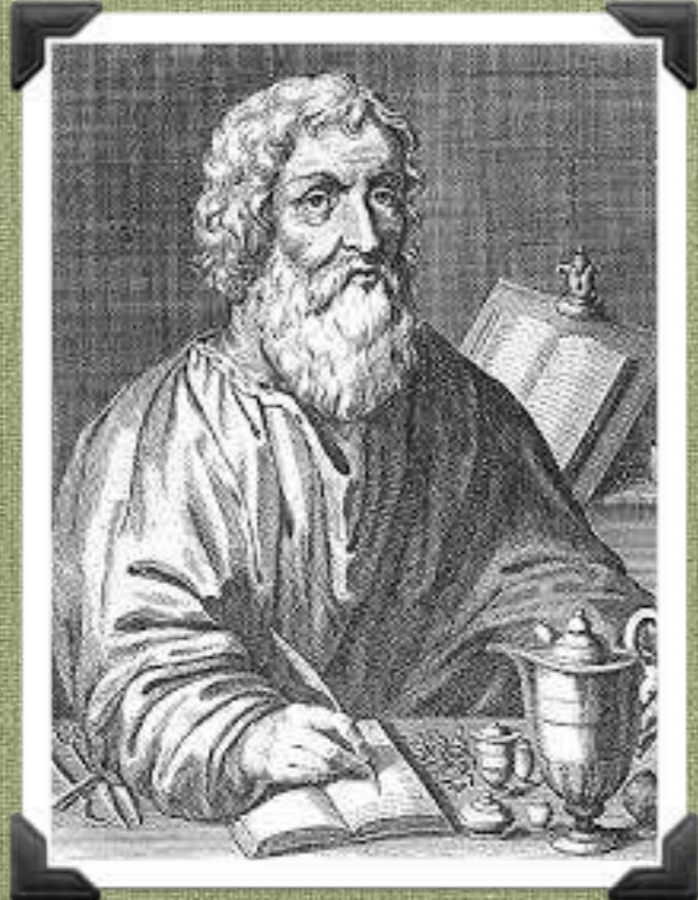
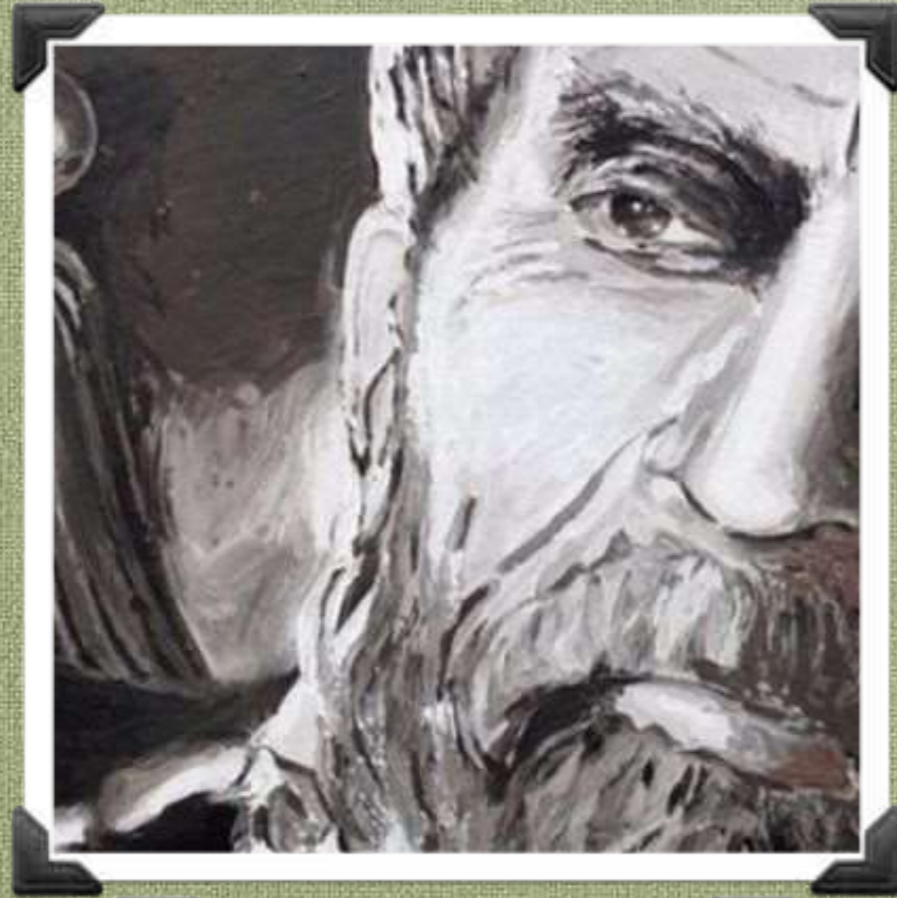


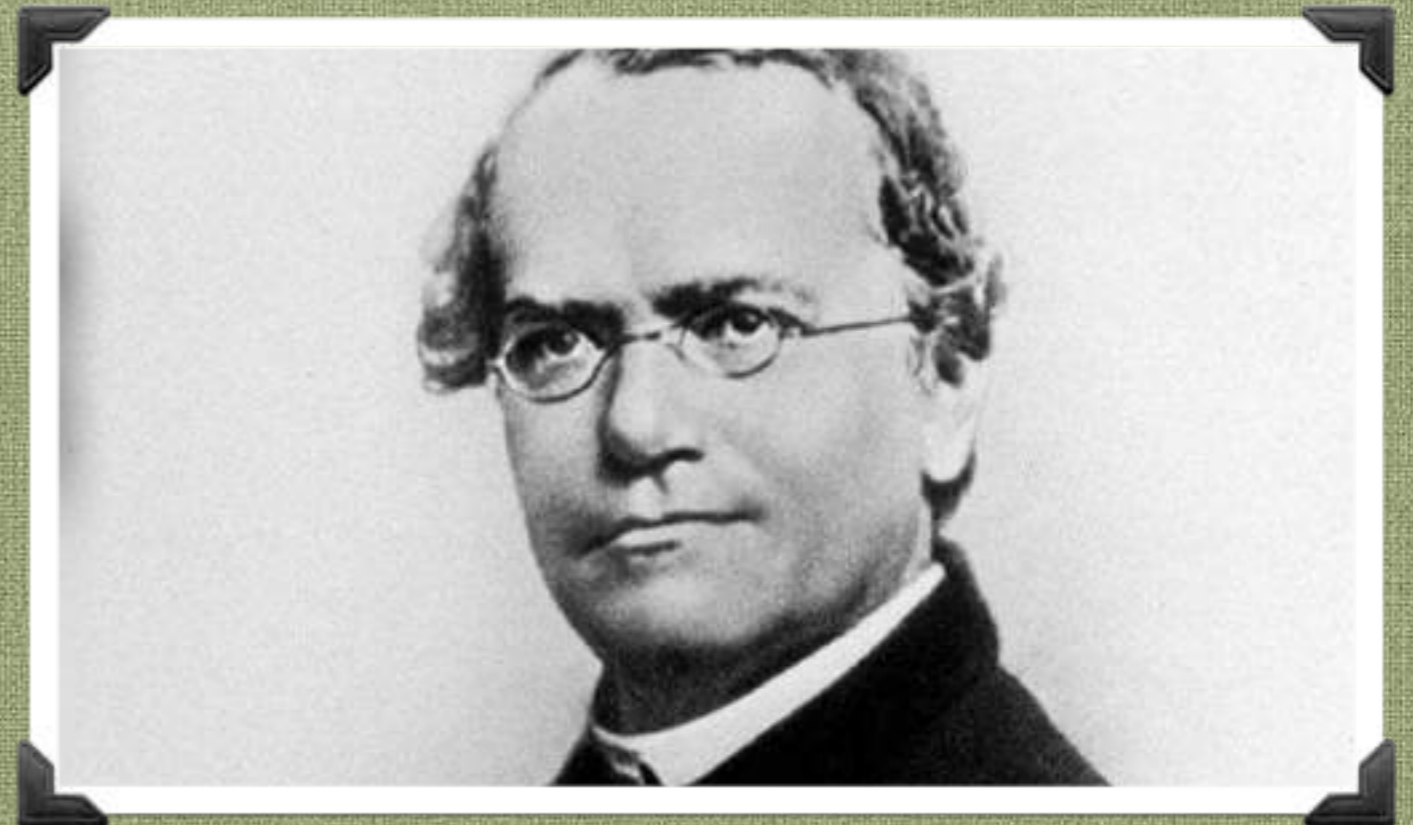
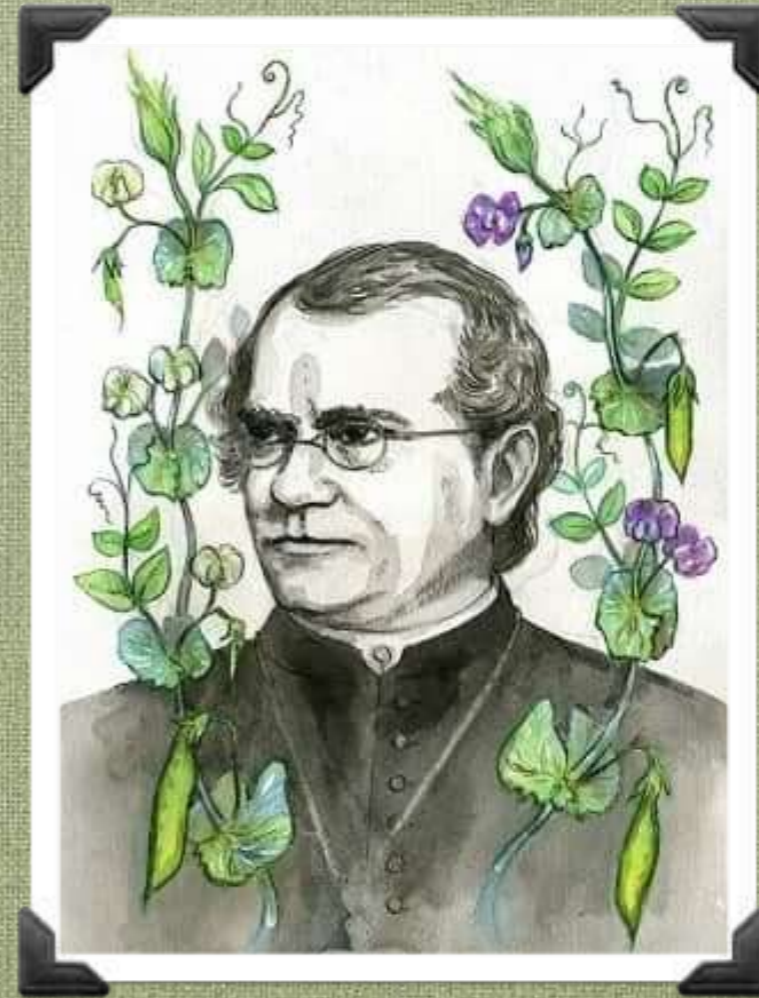
# LA GENETICA

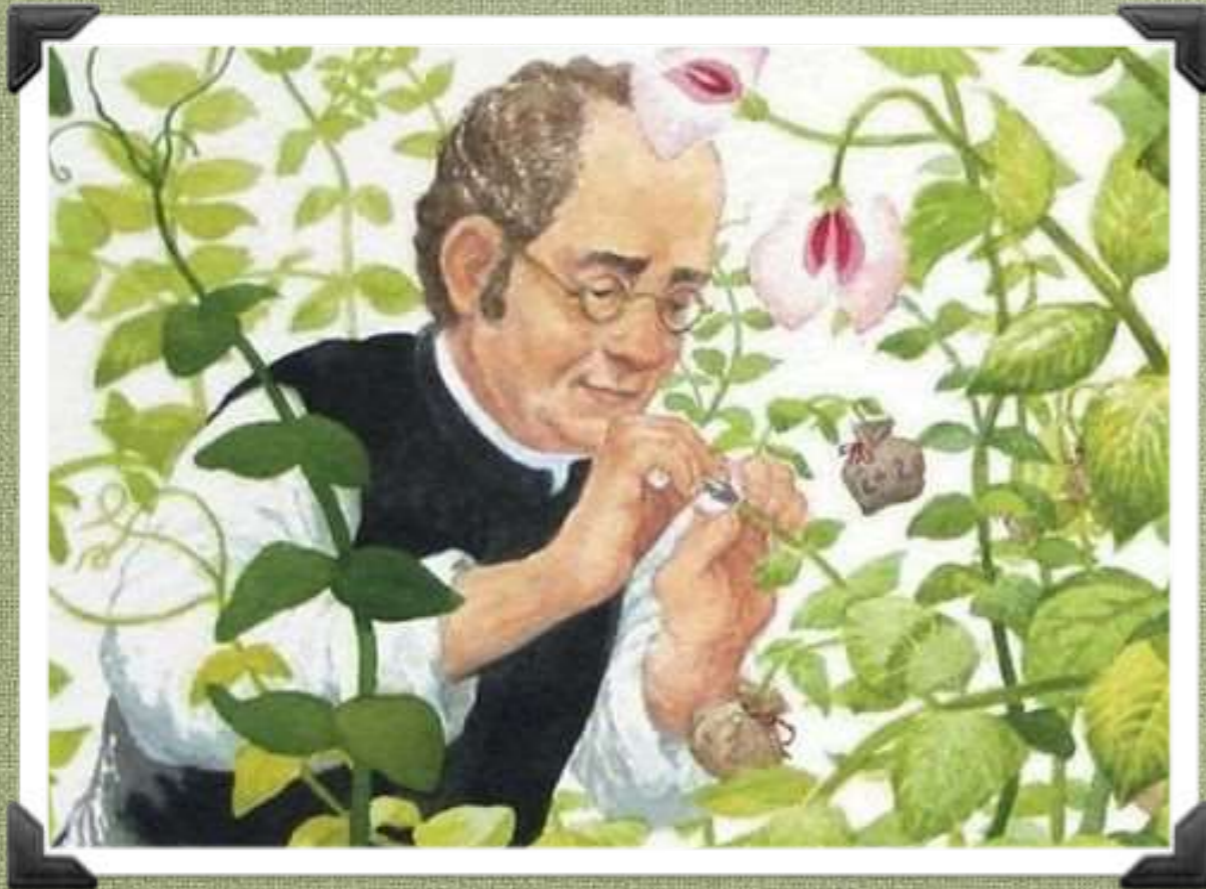


IPPOCRATE









MENDEL





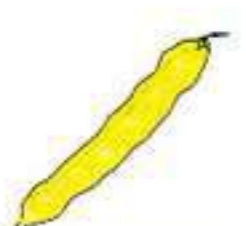





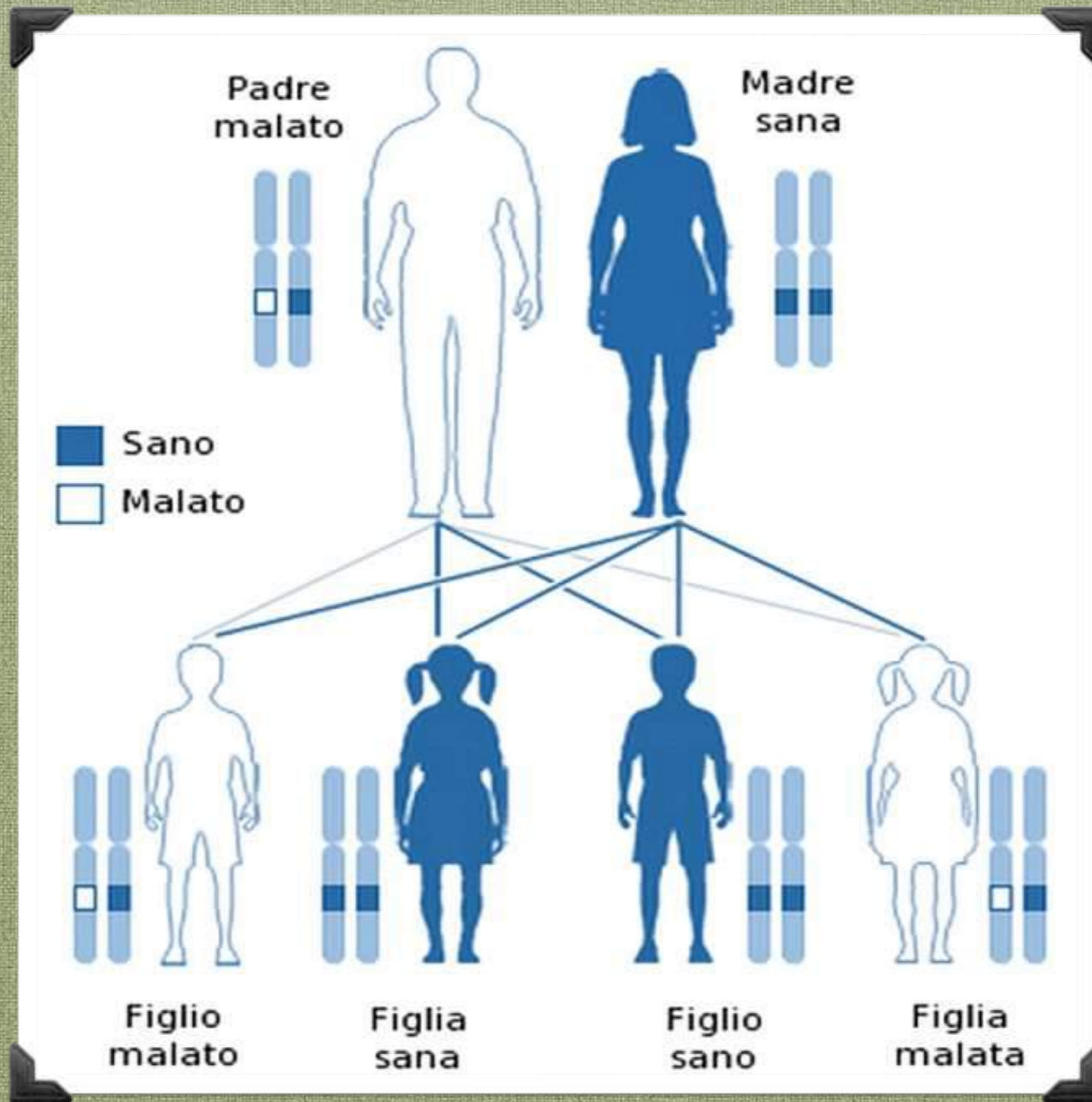
**Caratteri dominanti**

						
liscio	giallo	rosso	assiale	gonfio	verde	alto

**Caratteri recessivi**

						
rugoso	verde	bianco	terminale	schacciato	giallo	basso

# FATTORE PATERNO E MATERNO

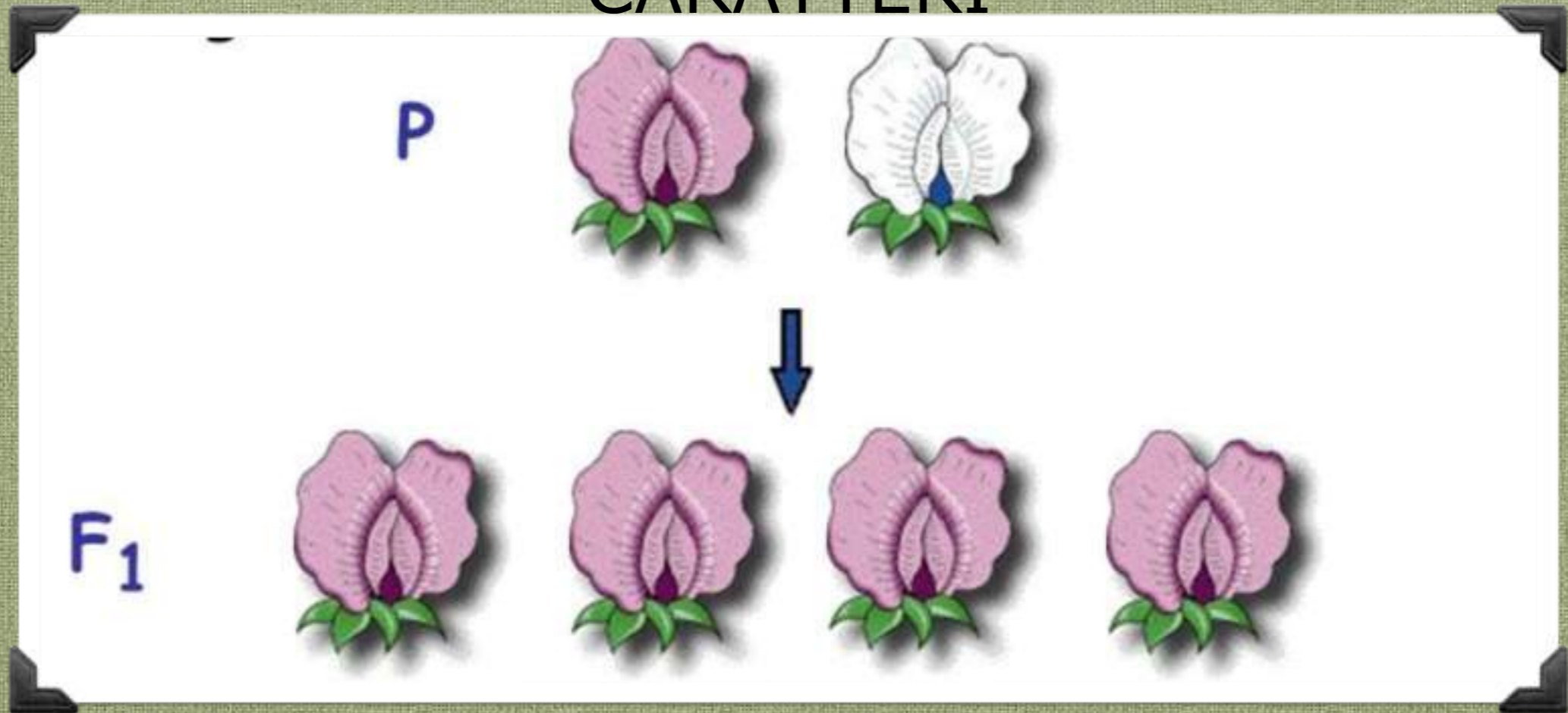




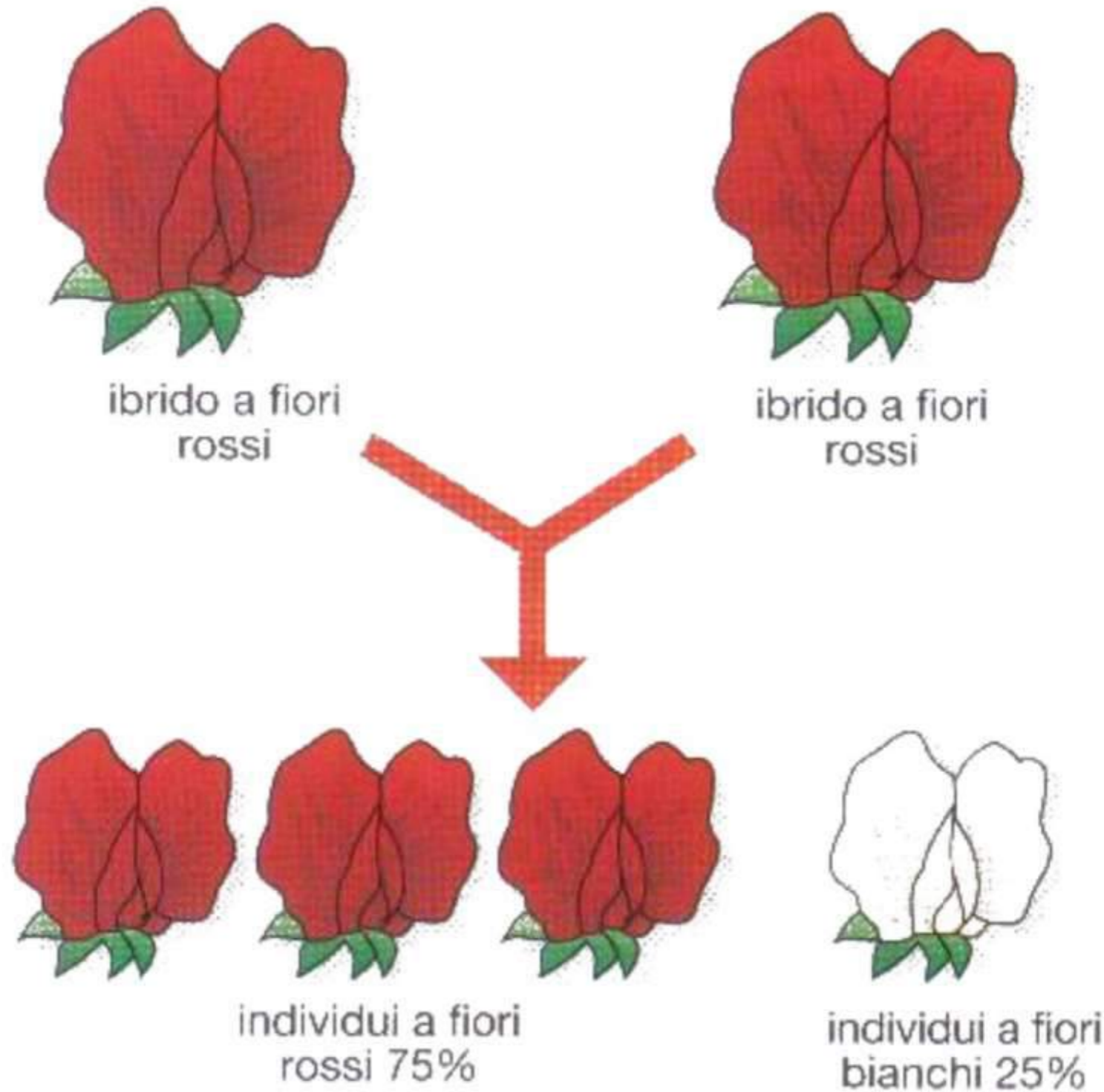
## AUTOIMPOLLINAZIONE



# PRIMA LEGGE DI MENDEL: LEGGE DELLA DOMINANZA DEI CARATTERI



# SECONDA LEGGE DI MENDEL: LEGGE DELLA SEGREGAZIONE DEI CARATTERI

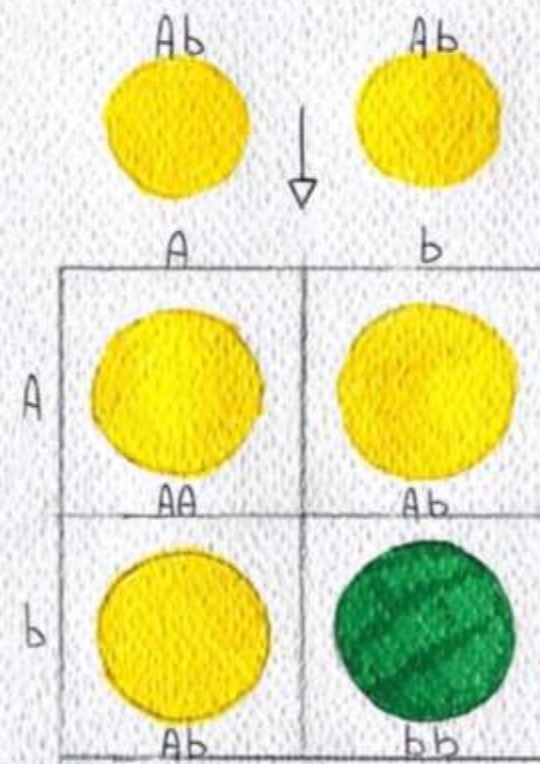
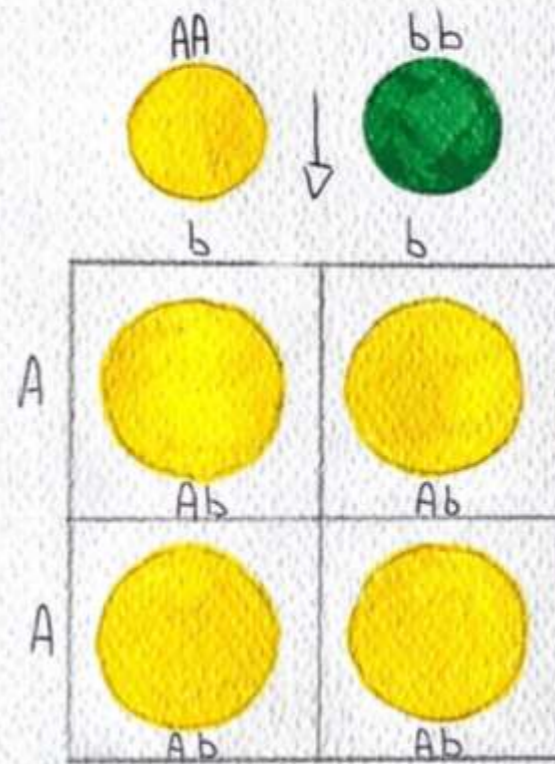
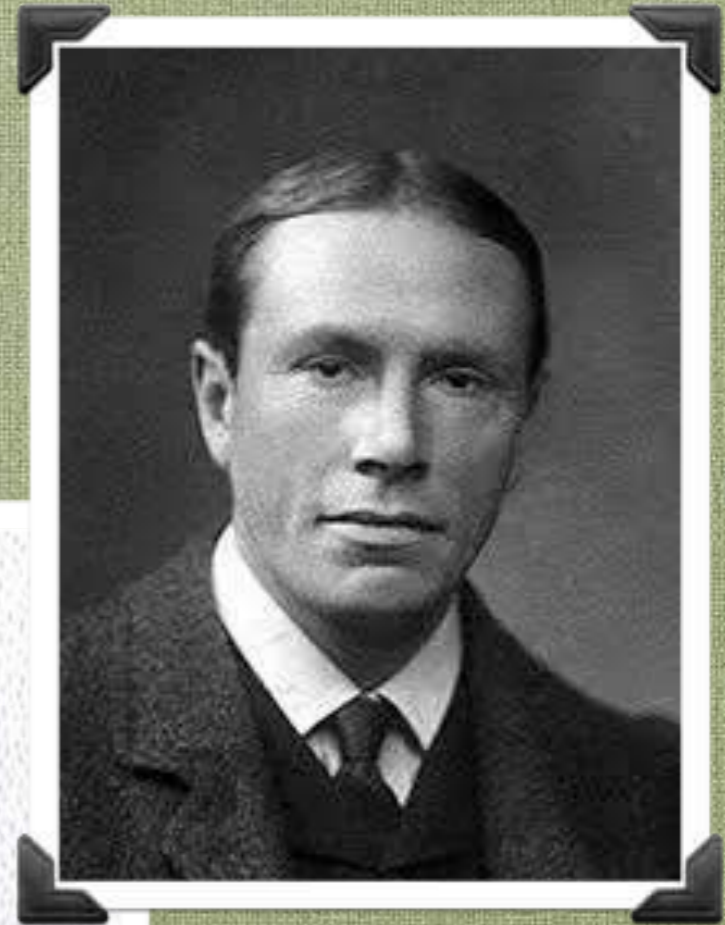


# TERZA LEGGE DI MENDEL: LEGGE DELL'INDIPENDENZA DEI CARATTERI



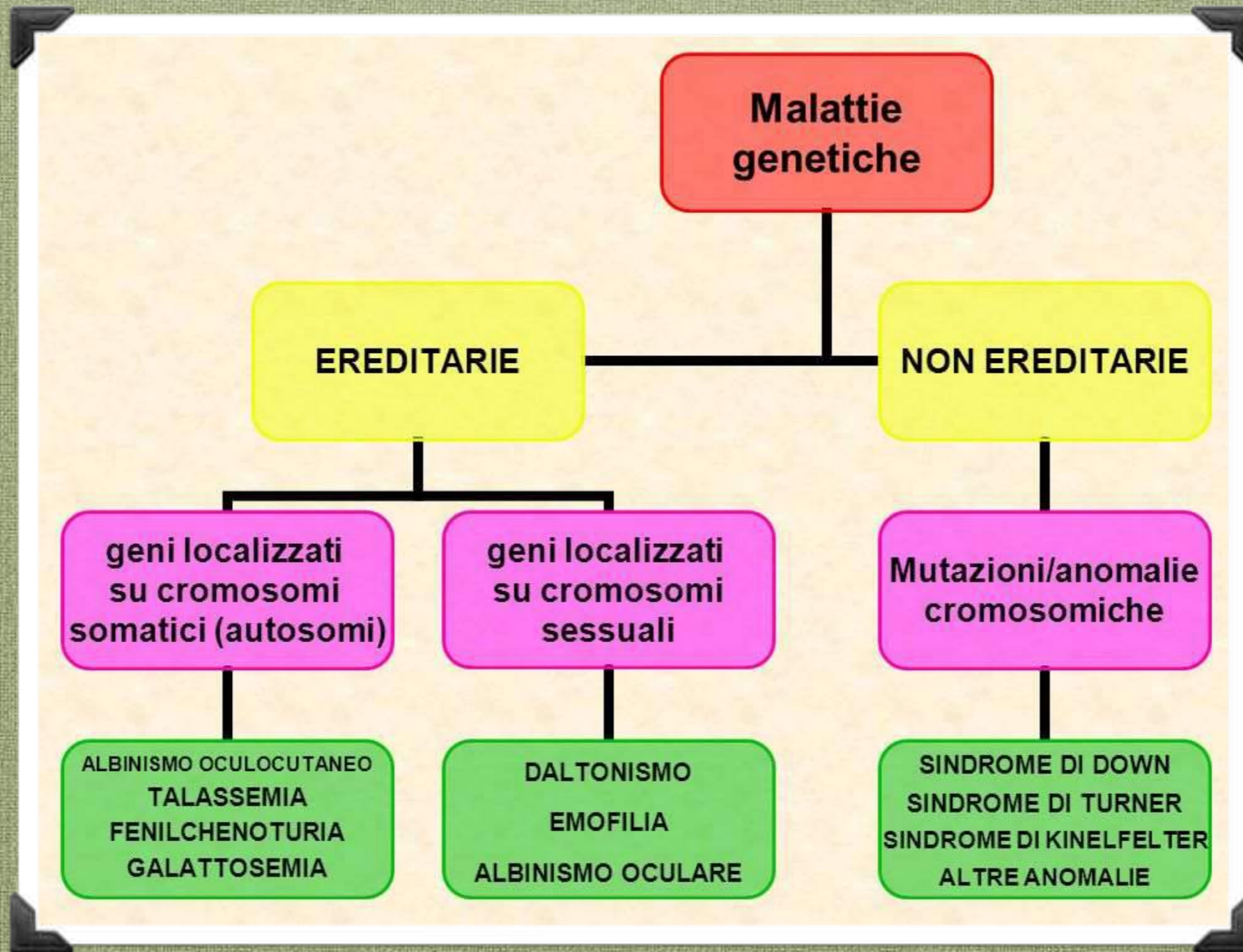


# Reginald Punnett



## ALLELI GRUPPI SANGUIGNI

<b>A</b>	dominante su	<b>0</b>
<b>B</b>	dominante su	<b>0</b>
<b>A e B</b>	co-dominanti	



# OSTEOGENESI IMPERFETTA



# ALBINISMO



SORRENTINO CAMILLA  
IIA  
19 APRILE 2020